



## REVIEW

# Comparison of cyclopentolate versus tropicamide cycloplegia: A systematic review and meta-analysis



Negareh Yazdani<sup>a,b</sup>, Ramin Sadeghi<sup>c</sup>, Hamed Momeni-Moghaddam<sup>a,b</sup>,  
Leili Zarifmahmoudi<sup>c</sup>, Asieh Ehsaei<sup>a,b,\*</sup>

<sup>a</sup> Refractive Errors Research Center, Mashhad University of Medical Sciences, Mashhad, Iran

<sup>b</sup> Department of Optometry, Mashhad University of Medical Sciences, Mashhad, Iran

<sup>c</sup> Nuclear Medicine Research Center, Mashhad University of Medical Sciences, Mashhad, Iran

Received 21 December 2016; accepted 4 September 2017

Available online 11 November 2017

### KEYWORDS

Tropicamide;  
Cyclopentolate;  
Cycloplegia;  
Cycloplegic

### Abstract

**Purpose:** The aim of the present meta-analysis is to compare the efficacy of cyclopentolate and tropicamide in controlling accommodation during refraction.

**Methods:** A comprehensive literature search was performed in PubMed, Scopus, Science direct and Ovid databases by the key words: “tropicamide”; “cyclopentolate”; “cycloplegia” and “cycloplegic” from inception to April 2016. Methodological quality of the literature was evaluated according to the Oxford Center for Evidence Based Medicine and modified Newcastle-Ottawa scale. Statistical analyses were performed using Comprehensive Meta-Analysis (version 2; Biostat Inc., USA).

**Results:** The present meta-analysis included six studies (three randomized controlled trials and three case-control studies). Pooled standardized difference in the mean changes in the refractive error was 0.175 D [lower and upper limits: -0.089; 0.438] more plus in the cyclopentolate group compared to the tropicamide group; however, this difference was not statistically significant ( $p=0.194$ ; Cochrane  $Q$  value = 171.72 ( $p < 0.05$ );  $I^2 = 95.34\%$ ). Egger’s regression intercept was -5.33 ( $p=0.170$ ). Considering type of refractive errors; refractive assessment procedure and age group; although cycloplegic effect of cyclopentolate was stronger than tropicamide; however, this effect was only statistically significant in children; hyperopic patients and with retinoscopy.

**Conclusion:** We suggest that tropicamide may be considered as a viable substitute for cyclopentolate due to its rapid onset of action. Although these results should be used cautiously in infants and in patients with high hyperopia or strabismus when using tropicamide as the sole cycloplegic agent especially in situations that the findings are variable or there is no consistency between the examination results and clinical manifestations of the visual problems.

© 2017 Spanish General Council of Optometry. Published by Elsevier España, S.L.U. This is an open access article under the CC BY-NC-ND license (<http://creativecommons.org/licenses/by-nc-nd/4.0/>).

\* Corresponding author at: Department of Optometry, Mashhad University of Medical Sciences, Parastar 2, Ahmabad Avenue, Iran.  
E-mail address: [ehsaeia@mums.ac.ir](mailto:ehsaeia@mums.ac.ir) (A. Ehsaei).

**PALABRAS CLAVE**

Tropicamida;  
Ciclopentolato;  
Cicloplejia;  
Ciclopléjico

## Comparación de la cicloplejia con Ciclopentolato y Tropicamida: revisión sistemática y meta-análisis

**Resumen**

**Objetivo:** El objetivo del presente meta-análisis es comparar la eficacia de ciclopentolato y tropicamida a la hora de controlar la acomodación durante la refracción.

**Métodos:** Se realizó una búsqueda amplia en la literatura en las bases de datos de PubMed, Scopus, Science direct y Ovid, utilizando las palabras clave: "tropicamida", "ciclopentolato", "cicloplejia" y "ciclopléjico" desde sus inicios a Abril de 2016. La calidad metodológica de la literatura se evaluó con arreglo a Oxford Center for Evidence Based Medicine y la escala Newcastle-Ottawa modificada. Los análisis estadísticos se realizaron utilizando el software Comprehensive Meta-Analysis (versión 2, Biostat Inc., EEUU).

**Resultados:** El presente meta-análisis incluyó seis estudios (tres ensayos controlados aleatorizados y tres estudios de casos-control). La diferencia estandarizada combinada de los cambios medios del error refractivo fue de 0,175 D [límites inferior y superior: -0,089, 0,438], más acusada en el grupo ciclopentolato con respecto al grupo tropicamida aunque, sin embargo, esta diferencia no fue estadísticamente significativa ( $p=0,194$ , Valor Q de Cochrane = 171,72 ( $p < 0,05$ ),  $I^2 = 95,34\%$ ). El valor del intercepto de regresión de Egger fue de  $-5,33$  ( $p=0,17$ ). Considerando el tipo de errores refractivos, el procedimiento de valoración refractiva y el grupo de edad, aunque el efecto ciclopléjico de ciclopentolato fue más fuerte que el de tropicamida, dicho efecto fue únicamente significativo en niños, pacientes hipermétropes, y con retinoscopia.

**Conclusión:** Sugerimos la consideración de tropicamida como sustituto viable de ciclopentolato, debido a su rápido inicio de acción. Aunque estos resultados deberían utilizarse con precaución en niños y en pacientes con elevada hipermetropía o estrabismo al utilizar tropicamida como único agente ciclopléjico, especialmente en situaciones en las que los hallazgos sean variables, o no exista consistencia entre los resultados del examen y las manifestaciones clínicas de los problemas visuales.

© 2017 Spanish General Council of Optometry. Publicado por Elsevier España, S.L.U. Este es un artículo Open Access bajo la licencia CC BY-NC-ND (<http://creativecommons.org/licenses/by-nc-nd/4.0/>).

**Introduction**

Refractive assessment especially in patients younger than 40 years is usually impressed by the accommodative spasm and possibly a myopic shift in the results. Spasm of accommodation become evident as pseudomyopia or latent hyperopia. Therefore, cycloplegic refraction using cycloplegic drugs is an effective way to reduce fluctuation in accommodation or spasm of ciliary muscle.<sup>1-3</sup>

The drug of choice should have a rapid onset, appropriate cycloplegic effect and minimum side effects. Although, atropine is the gold standard for its cycloplegic effects, however, its prolonged blur vision, slow onset and long recovery time have limited its application to very specific conditions.<sup>4</sup> Moreover, it can be associated with serious side effects including allergic contact dermatitis of the lids, allergic conjunctivitis, keratitis, and increase in intraocular pressure.<sup>5</sup> Atropine may be used with caution due to possibility of converting intermittent esotropia to constant esotropia.<sup>6</sup> Two of the most commonly used agents include tropicamide and cyclopentolate. The major differences between them are duration of the onset, maximum efficacy, recovery time and probable side effects.<sup>5</sup>

Cyclopentolate is a synthetic antimuscarinic cycloplegic agent and is available in 0.5% and 1% solutions. It is widely

accepted drug of first choice for patients of all ages which provides excellent short-term cycloplegia. Its cycloplegic effects begins at 25–75 min after administration of the drop and recovery appears through 6–24 h later.<sup>6</sup> Ocular side effects may include irritation, lacrimation, allergic blepharoconjunctivitis, conjunctival hyperemia, and increase in intraocular pressure. Some of its systemic side effects are drowsiness, ataxia, disorientation, incoherent speech, restlessness, and visual hallucinations.<sup>4</sup>

Tropicamide, as an alternative, is a synthetic analog of tropic acid and is known as a safe agent for cycloplegic refraction. It characterized by a rapid onset and the cycloplegia effect appears 20–30 min after administration. Its recovery appears 6 h later.<sup>7</sup> Ocular side effects include stinging sensation in the eye, corneal irritation, and increase in intraocular pressure. Systemic side effects include dry mucous membranes, flushing, and tachycardia.<sup>4</sup>

Several studies have been conducted to compare the cycloplegic effect of these two agents and different results have been reported.<sup>8-13</sup> Because of inconsistencies in the previous reported results, this meta-analysis was conducted to summarize the results regarding the comparison of the cycloplegic effect, in terms of refractive outcome, between cyclopentolate and tropicamide and provide the final conclusion.

## Material and methods

### Search strategy and inclusion criteria

The PRISMA guidelines for performing the current meta-analysis was followed. A comprehensive literature search of PubMed, Scopus, Science direct and Ovid databases was carried out to find the relevant peer-reviewed publications investigated the effects of cyclopentolate and tropicamide cycloplegic agents with regard to the changes in the mean spherical equivalent for each drop. To find the relevant studies, a search algorithm based on the combination of the terms: "tropicamide", "cyclopentolate", "cycloplegia" and "cycloplegic" was used. The search was performed from inception to September 2016. In addition, references list of relevant studies were reviewed for possible missing citations. The search was performed by two authors independently (NY & AE).

### Inclusion criteria

Participants of the included studies had no history of cardiovascular or neurological diseases, no history of ocular pathology, no history of allergy to drops, taking no ocular or systemic medicines, and no history of amblyopia or strabismus.

### Quality assessment

Quality scoring of included studies were carried out using the Newcastle – Ottawa quality assessment scale for case control studies (Table 1) and Oxford Center for Evidence-Based Medicine (Table 2) for randomized controlled trials studies.

## Statistical analysis

For each study, difference in mean of the changes in the spherical equivalent for the cyclopentolate and tropicamide groups was used as the main effect size. To pool the effect sizes across studies, a random effects model was used. Heterogeneity was evaluated by the Cochrane Q test (the significance level was considered to be 0.05.), and  $I^2$  index.<sup>14</sup> Publication bias was evaluated graphically by funnel plots and statistically by Egger's regression intercept method.<sup>15</sup> Sub-group analysis was performed for exploring the effect of underlying refractive error, age of the patients, and measurement device on the pooled effect sizes. All statistical analyses were performed using Comprehensive Meta-Analysis (version 2, Biostat Inc., USA).

## Results

PRISMA flow chart (PRISMA 2009 flow diagram) of the study is shown in Fig. 1. Overall six studies were included in the present meta-analysis. Three studies had randomized controlled trial (RCT) design and three studies were case-control. The details of these studies are illustrated in Table 3.

The pooled difference in mean of refractive change was 0.175 D (95%CI: -0.089, 0.438) higher in the cyclopentolate group as compared to the tropicamide group ( $p=0.194$ ) cycloplegic refraction results with cyclopentolate was more plus than tropicamide. Overall, cyclopentolate had a stronger but no statistically significant cycloplegic effect. Eggers regression intercept was -5.33,  $p=0.170$ .

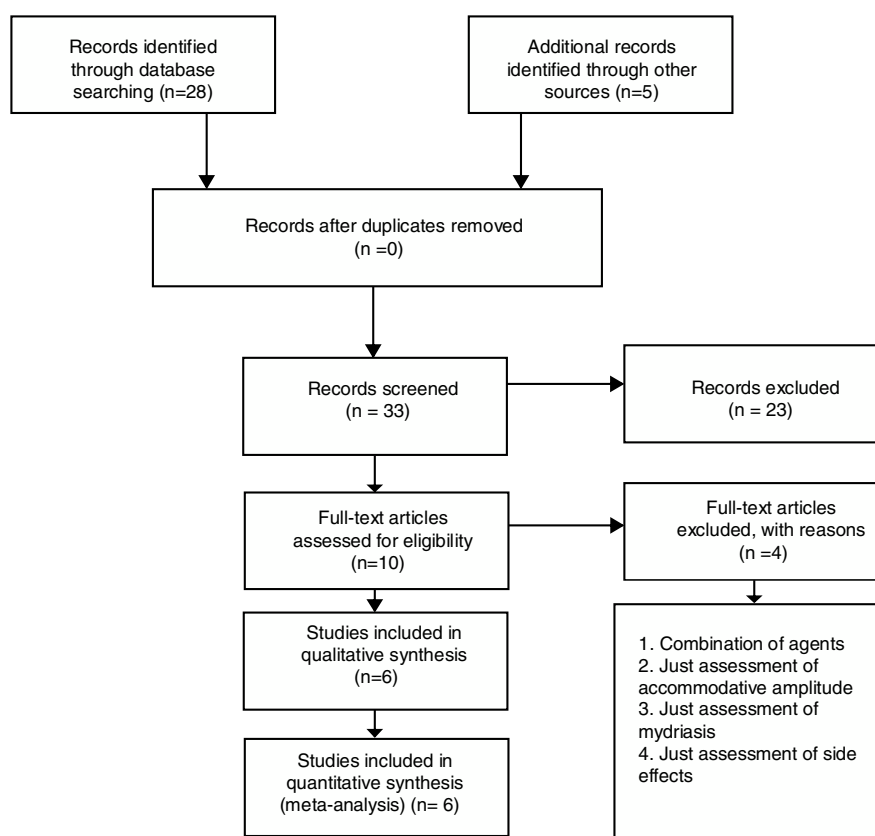
Fig. 2 shows the forest plots of the main analysis. Fig. 2A illustrated that difference between two drugs was more evident with retinoscopy ( $p<0.001$ , 95%CI: 0.199, 0.417) compared to the auto-refractor ( $p=0.519$ , 95%CI: -0.079, 0.157). The overall results have not been changed, even

**Table 1** Quality assessment for case-control studies.

Study	Case selection	Assessment of the outcome
Pi <sup>12</sup>	1. The actual age when examining was between 6 and 15 years. 2. Children were not diagnosed with systemic cardiovascular disease or neurological diseases.	Retinoscope
Lin <sup>11</sup>	1. Either gender 2. Age 7–13 years 3. Refractive errors between -1.5 D to -6.0 D 4. Astigmatism less than -1.5 D 5. Free of ocular and systemic disease 6. No contraindication for pupillary dilation 7. Taking no ocular or systemic medications	Auto refractometer and retinoscope
Egashira <sup>9</sup>	1. Non-strabismic children 2. Non-amblyopic children 3. Hyperopic children with a mean refractive error of $+1.48 \pm 1.10$ D 4. 6–12 years old children	Retinoscope and auto refractometer

**Table 2** Quality assessment for randomized controlled trial studies.

Study	Randomization method	Blinding	Similarity of the groups	Aside from the allocated treatment, were groups treated equally?	Lost to follow up?	Objective measures?
Hofmeister <sup>10</sup>	By using a random number table	Examiners and patients were blinded to randomization	Yes	Yes	2/30	Yes, by automated phoropter
Twelker <sup>8</sup>	The bottles containing both cycloplegic agents were masked and the drop that was administered at the first visit was randomly assigned	The examiner was masked to all prior Non-cycloplegic and cycloplegic retinoscopy findings.	Yes	Yes	NA	Yes, by retinoscopy
Rajan <sup>13</sup>	Not mentioned	NA	Yes	Yes	NA	Yes, by retinoscopy

**Figure 1** PRISMA flowchart describing the selection of articles.

after excluding the study by Lin et al.<sup>11</sup> which evaluated the outcome of the eye drops in every 15 min (Fig. 2D). The Lin et al. study resulted in a mean pooled difference  $-0.08$  (95%CI:  $-0.176, 0.016$ ) in refractive error ( $p=0.102$ ).<sup>11</sup>

Fig. 2B shows that in the patients with myopia, cyclopentolate efficacy was not significantly different from tropicamide ( $p=0.897$ , 95%CI:  $-0.142, 0.162$ ) compared to

the hyperopia ( $p=0.001$ , 95%CI:  $0.104, 0.396$ ) and mixed refraction ( $p=0.001$ , 95%CI:  $0.136, 0.494$ ) group.

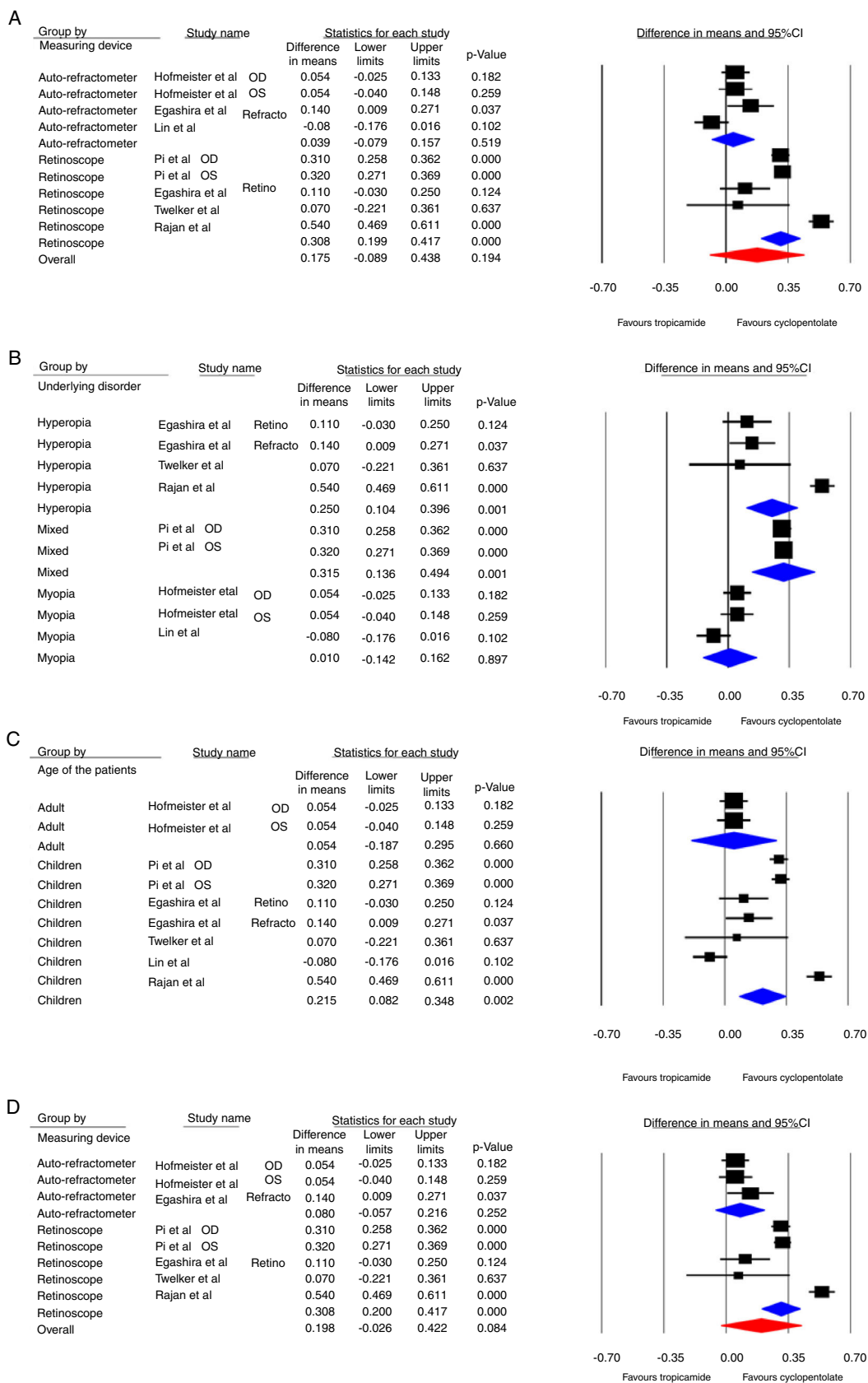
Fig. 2C shows that there was no significant difference between the two drops in adults ( $p=0.660$ , 95%CI:  $0.187, 0.295$ ), unlike children ( $p=0.002$ , 95%CI:  $0.082, 0.348$ ).

Funnel plot of the meta-analysis is shown in Fig. 3. Sub-group analyses of the study are shown in Table 4.

**Table 3** Characteristic of included articles.

Study	Study design	Region	Sample (n)	Age	RE	Device	Agents	Tropicamide (mean diff. $\pm$ SD)	Cyclopentolate (mean diff. $\pm$ SD)	Mean diff. (mean $\pm$ SD) between agents	Cycloplegic agents dosage/interval time
Hofmeister et al. <sup>10</sup>	RCT	USA	Adult (30)	21–50 y	M	Auto/Phora	Trop 1% – Cyclop 1%	–	–	OD: 0.054 $\pm$ 0.214 OS: 0.054 $\pm$ 0.253	Trop: 2 drops/5 min Cyclop: 2 drops/5 min
Lin et al. <sup>11</sup>	CC	China	Children (37)	7–13 y	M/Astig	Auto	Trop 1% – Cyclop 1%	OU: –0.36 $\pm$ –0.23	OU: –0.28 $\pm$ –0.35	–	Trop: 2 drops/5 min Cyclop: 2 drops/5 min
Egashira et al. <sup>9</sup>	CC	USA	Children (20)	6–12 y	H	Auto/Ret	Trop 1% – Cyclop 1%	–	–	Ret: 0.11 $\pm$ 0.32 Sub. R: 0.06 $\pm$ 0.34 Auto R: 0.14 $\pm$ 0.30	Trop: 2 drops/5 min Cyclop: 2 drops/5 min
Twelker et al. <sup>8</sup>	RCT	USA	Infants (29)	4–7 m	H/Astig	Ret	Trop 1% – Cyclop 1%	OU: 0.89 $\pm$ 0.66	OU: 1.04 $\pm$ 0.94	OU: 0.07 $\pm$ 0.80	Trop: 2 drops/5 min Cyclop: 2 drops/5 min
Pi et al. <sup>12</sup>	CC	China	Children (1907)	6–15 y	H/M/E	Ret	Trop 0.5% – Cyclop 1%	OD: 0.19 $\pm$ 1.18 OS: 0.25 $\pm$ 1.10	OD: 0.5 $\pm$ 1.23 OS: 0.57 $\pm$ 1.16	OD: 0.31 OS: 0.32	Trop: 3 drops/10 min Cyclop: 3 drops/10 min
Rajan et al. <sup>13</sup>	RCT	India	Children (25)	6–15 y	H	Ret	Trop 1% – Cyclop 0.5%	–	–	OU: 0.54 $\pm$ 0.18	Trop: 3 drops/5 min Cyclop: 2 drops/5 min

RCT: randomized controlled trial; CC: case-control; RE: refractive error; Astig: astigmatism; M: myopia; H: hyperopia; E: emmetropia; Phora: phoropter; Ret: retinoscopy; Auto R: auto-refraction; Sub. R: subjective refraction; Trop: tropicamide; Cyclop: cyclopentolate; OD: right eye; OS: left eye; OU: both eyes; mean diff: mean difference between mean of agents.



**Figure 2** (A) Random-effect meta-analysis according to the applied device. (B) Random-effect meta-analysis according to the type of refractive error. (C) Random-effect meta-analysis according to the sample. (D) Overall random-effect meta-analysis excluding Lin et al.'s study.

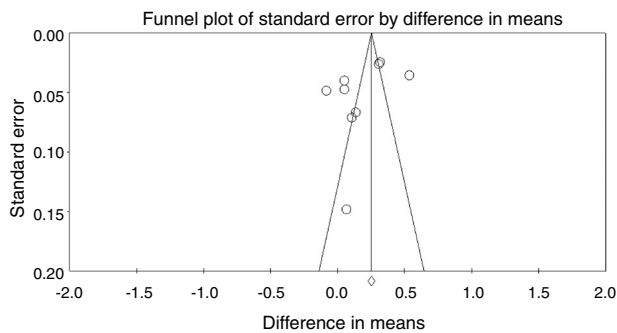


Figure 3 Funnel plot of meta-analysis.

## Discussion

Overall, this study showed that cyclopentolate produces an insignificant mean refractive change of 0.175 D more plus than tropicamide. However, subgroup analysis displayed higher and statistically significant dioptric changes using cyclopentolate compared to tropicamide by retinoscopy versus autorefraction (0.31 vs. 0.04 D) and in children versus adults (0.22 vs. 0.05 D) and in hyperopic and mixed versus myopic refractive errors (0.25 and 0.31 vs. 0.01 D). Although these changes are statistically significant but the means or even upper limits of the 95%CI are not clinically significant based on the proposed criterion by Guha et al., who considered a dioptric difference more than 0.50 in sphere or cylinder as a significant clinical change.<sup>16</sup>

Cycloplegic refraction is a procedure to determine refractive status while the ciliary muscles are temporarily paralyzed with cycloplegic agents. Inadequate cycloplegic effect may shift results in an under-plus or over-minus direction. In addition to sufficient effect and no adverse reactions, time is an important factor of an ideal cycloplegic agent. Therefore, an ideal agent should have rapid onset of effect and fast recovery of accommodation.<sup>17</sup> Cycloplegic maximum effect occurs between 45 and 90 min for cyclopentolate 1% and 30–70 min for tropicamide 1% following the final eye drop administrated.<sup>14</sup> It has been shown that there is a strong correlation between the exact time waiting to complete examination and patient satisfaction levels so that minimizing the waiting time increases the satisfaction levels significantly.<sup>18</sup>

Residual accommodation is another parameter in choosing an appropriate cycloplegic drug. Previously it was believed that tropicamide provides an unacceptable cycloplegic effect especially in children. This view was based on the subjective accommodative assessment to determine the amount of residual accommodation for example using the push-up test to measure the accommodative amplitude. Further investigations using the objective methods illustrated that the residual accommodation was not higher than the accepted level (less than 1 D).<sup>19,20</sup>

Measuring device can also influence the achieved results. More cycloplegic effect obtained by cyclopentolate compared to tropicamide by retinoscopy technique may be attributed to better stability of the accommodative system especially when looking to a non-accommodative fixation target used at distance. This issue is very important in

refractive assessment of infants, young children and also in uncooperative subjects who performing autorefraction is very difficult.

The findings of many comparative studies of the cycloplegic effects of tropicamide and cyclopentolate in children<sup>9,14,19,21</sup> and adults<sup>10</sup> are in agreed with the results of the present meta-analysis.

Hofmeister et al. reported no statistically significant difference between these two agents (mean difference  $0.05 \pm 0.25$  D) in the myopic adults (age range 21–50 years).<sup>10</sup> Egashira et al. concluded that although the inhibitory effect of tropicamide on the accommodative system is weaker compared to other agents, it may be used as an effective cycloplegic drug in children with low to moderate levels of hyperopia.<sup>9</sup>

The current results are also in concordance with Pi et al.<sup>12</sup> but in contrast with the findings of Egashira et al. who reported insignificant difference using cycloplegic retinoscopy between the two agents and statistically but no clinically considerable change toward more hyperopia with cyclopentolate using autorefraction.<sup>9</sup> Sometimes, cycloplegic disparity of these two agents using retinoscopy may be linked to differences in the peak time and recovery speed of their effects.<sup>14</sup> The relatively long-lasting maximum cycloplegic effect of cyclopentolate compared to tropicamide makes it a more suitable agent for cycloplegic retinoscopy in children and especially poor cooperative children who need longer duration of retinoscopy. On the other hand, Twelker and Mutti<sup>8</sup> comparing tropicamide 1%, and cyclopentolate 1% in infants noted a statistically significant but not a clinically significant finding of 0.14 D toward more hyperopia with cyclopentolate using autorefraction<sup>15</sup> that in line with the present study.

A stronger cycloplegic effect has been observed using cyclopentolate in children consistent with the findings of Pi et al.<sup>12</sup> and Owens et al.<sup>21</sup> This finding can be attributed to differences in the accommodative capacity in the two age groups.<sup>12,21</sup> Higher disparity seen in the subjects with mixed and hyperopic refractive errors (0.250 and 0.315 D, respectively) was suggested that cyclopentolate has more efficacy and inhibitory ability in those refractive conditions than in myopia (0.010 D) which is in line with the findings of Pi et al.<sup>12</sup>

In conclusion, although cycloplegic effect of cyclopentolate was statistically stronger when its effect was evaluated by the type of refractive errors, refractive assessment procedure and age group, however, this effect was not clinically significant in children, hyperopic patients and by using retinoscopy. One important point to note is that although retinoscopy is a more reliable objective verification method, however, results may vary based on several factors such as cooperation of the patient and skill of the clinician. According to the above mentioned findings and from the standpoint of rapid onset cycloplegic effect and shorter duration of peak effect, tropicamide can be considered as a viable substitute for cyclopentolate. In infants and patients with high hyperopia or strabismus, use caution when using tropicamide as the sole cycloplegic agent, especially in situations that the findings are variable or there is no consistency between the examination results and clinical manifestations of visual problems.

**Table 4** Subgroup analysis based on the applied device, type of refractive error and sample.

Variables	Applied device		Type of refractive error			Sample	
	Retinoscopy	Auto-refract meter	Myopia	Hyperopia	Mixed	Adults	Children
Pooled standardized difference in means [lower and upper limits]	OD: 0.310 [0.258 and 0.362] $p < 0.001(12)$	OD: 0.054 [−0.025 and 0.133] $p = 0.182(10)$	OD: 0.054 [−0.025 and 0.133] $p = 0.182(10)$	Ret: 0.110 [−0.030 and 0.250] $p = 0.124(9)$	OD: 0.310 [0.258 and 0.362] $p < 0.001(12)$	OD: 0.054 [−0.025 and 0.133] $p = 0.182(10)$	OD: 0.310 [0.258 and 0.362] $p < 0.001(12)$
$p$ -value (reference)	OS: 0.320 [0.271 and 0.369] $p < 0.001(12)$	OS: 0.054 [−0.040 and 0.148] $p = 0.259(10)$	OS: 0.054 [−0.040 and 0.148] $p = 0.259(10)$	Auto: 0.140 [0.009 and 0.271] $p = 0.037(9)$	OS: 0.320 [0.271 and 0.369] $p < 0.001(12)$	OS: 0.054 [−0.040 and 0.148] $p = 0.259(10)$	OS: 0.320 [0.271 and 0.369] $p < 0.001(12)$
	0.110 [−0.030 and 0.250] $p = 0.124(9)$	0.140 [0.009 and 0.271] $p = 0.037(9)$	−0.080 [−0.176 and 0.016] $p = 0.102(11)$	0.070 [−0.221 and 0.361] $p = 0.637(8)$	0.070 [−0.221 and 0.361] $p = 0.637(8)$	0.070 [−0.221 and 0.361] $p = 0.637(8)$	Ret: 0.110 [−0.030 and 0.250] $p = 0.124(9)$
	0.070 [−0.221 and 0.361] $p = 0.637(8)$	−0.080 [−0.176 and 0.016] $p = 0.102(11)$		0.540 [0.469 and 0.611] $p < 0.001(13)$	0.540 [0.469 and 0.611] $p < 0.001(13)$	0.070 [−0.221 and 0.361] $p = 0.637(8)$	Auto: 0.140 [0.009 and 0.271] $p = 0.037(9)$
	0.540 [0.469 and 0.611] $p < 0.001(13)$					0.070 [−0.221 and 0.361] $p = 0.637(8)$	0.070 [−0.176 and 0.016] $p = 0.102(11)$
							0.540 [0.469 and 0.611] $p < 0.001(13)$



## Conflicts of interest

The authors report no conflicts of interest and have no proprietary interest in any of the materials mentioned in this article.

## Acknowledgment

This research received no specific grant from any funding agency in the public, commercial, or not-for-profit sectors.

## References

1. Fotedar R, Rohtchina E, Morgan I, Wang JJ, Mitchell P, Rose KA. Necessity of cycloplegia for assessing refractive error in 12-year-old children: a population-based study. *Am J Ophthalmol*. 2007;144:307–309.
2. Hopkins S, Sampson GP, Hendicott P, Lacherez P, Wood JM. Refraction in children: a comparison of two methods of accommodation control. *Optom Vis Sci*. 2012;89:1734–1739.
3. Zhao J, Mao J, Luo R, Li F, Pokharel GP, Ellwein LB. Accuracy of noncycloplegic autorefraction in school-age children in China. *Optom Vis Sci*. 2004;81:49–55.
4. Sani RY, Hassan S, HSG. Cycloplegic effect of atropine compared with cyclopentolate-tropicamide combination in children with hypermetropia. *J Nigeria Med Assoc*. 2016;57:173–177.
5. Zhen C. *Clinical Ophthalmological Pharmacology*. Beijing: Chemical Industry Press; 2002.
6. Bartlett JD. Administration of and adverse reactions to cycloplegic agents. *Am J Optom Physiol Optics*. 1978;55:227–233.
7. Yolton DP, Kandel JS, Yolton RL. Diagnostic pharmaceutical agents: side effects encountered in a study of 15,000 applications. *J Am Optom Assoc*. 1980;51:113–118.
8. Twelker JD, Mutti DO. Retinoscopy in infants using a near noncycloplegic technique, cycloplegia with tropicamide 1%, and cycloplegia with cyclopentolate 1%. *Optom Vis Sci*. 2001;78:215–222.
9. Egashira SM, Kish LL, Twelker JD, Mutti DO, Zadnik K, Adams AJ. Comparison of cyclopentolate versus tropicamide cycloplegia in children. *Optom Vis Sci*. 1993;70:1019–1026.
10. Hofmeister EM, Kaupp SE, Schallhorn SC. Comparison of tropicamide and cyclopentolate for cycloplegic refractions in myopic adult refractive surgery patients. *J Cataract Refract Surg*. 2005;31:694–700.
11. Lin LL, Shih YF, Hsiao CH, Su TC, Chen CJ, Hung PT. The cycloplegic effects of cyclopentolate and tropicamide on myopic children. *J Ocul Pharmacol Therapeut*. 1998;14:331–335.
12. Pi LH, Zhao JL, Liu Q, et al. Comparison of cycloplegic retinoscopy using cyclopentolate or tropicamide eye drops in an epidemiologic study of pediatric refraction among 1907 school-aged children. *Scient Res Essay*. 2011;6:635–640.
13. Rajan C, Khurana AK, Ahluwalia BK. Pediatrics cycloplegic refraction: atropin, tropicamide or cyclopentolate? *Afro-Asian J Ophthalmol*. 1989;8:18–21.
14. Huedo-Medina TB, Sánchez-Meca J, Marín-Martínez F, Botella J. Assessing heterogeneity in meta-analysis:  $Q$  statistic or  $I^2$  index? *Psychol Methods*. 2006;11:193–206.
15. Song F, Khan KS, Dinnes J, Sutton AJ. Asymmetric funnel plots and publication bias in meta-analyses of diagnostic accuracy. *Int J Epidemiol*. 2002;31:88–95.
16. Guha S, Shah S, Shah K, Hurakadli P, Majee D, Gandhi S. A comparison of cycloplegic autorefraction and retinoscopy in Indian children. *Clin Exp Optom*. 2017;100:73–78.
17. Fan DS, Rao SK, Ng JS, Yu CB, Lam DS. Comparative study on the safety and efficacy of different cycloplegic agents in children with darkly pigmented irides. *Clin Exp Ophthalmol*. 2004;32:462–467.
18. McMullen MNP. Wait time as a driver of overall patient satisfaction in an ophthalmology clinic. *Clin Ophthalmol*. 2013;7:1655–1660.
19. Manny RE, Hussein M, Scheiman M, Kurtz D, Niemann K, Zinzer K, COMET Study Group. Tropicamide (1%): an effective cycloplegic agent for myopic children. *Investig Ophthalmol Vis Sci*. 2001;42:1728–1735.
20. Mutti DO, Zadnik K, Egashira S, Kish L, Twelker JD, Adams AJ. The effect of cycloplegia on measurement of the ocular components. *Investig Ophthalmol Vis Sci*. 1994;35:515–527.
21. Owens H, Garner LF, Yap MK, Frith MJ, Kinnear RF. Age dependence of ocular biometric measurements under cycloplegia with tropicamide and cyclopentolate. *Clin Exp Optom*. 1998;81:159–162.