



TECHNICAL REPORT

Peripheral refraction and higher-order aberrations with cycloplegia and fogging lenses using the BHVI-EyeMapper



Ravi Chandra Bakaraju^{a,*}, Cathleen Fedtke^a, Klaus Ehrmann^{a,b}, Darrin Falk^a, Varghese Thomas^a, Brien Anthony Holden^{a,b}

^a Brien Holden Vision Institute, Sydney, Australia

^b School of Optometry and Vision Science, Sydney, Australia

Received 13 March 2015; accepted 4 June 2015

Available online 17 July 2015

KEYWORDS

Accommodation;
Peripheral refraction
and higher-order
aberrations

Abstract

Purpose: To determine if a fogging lens ameliorates accommodative effects driven by the closed-view design of the BHVI-EyeMapper (EM) instrument. We compared cycloplegic refraction and higher-order aberration measurements of the EM with those obtained with a fogging lens.

Methods: Twenty-six, young, participants (15F, 25 ± 5 years, range: 18–35 years, SE: +0.25 D and –3.50 D) with good ocular health were recruited. Five independent measurements of on- and off-axis refraction and higher-order aberrations were recorded across the horizontal visual field, under two conditions: non-cycloplegic measurements with +1.00 D fogging lens and cycloplegia, always in the same sequence. The contralateral eye was occluded during the measurements. Two drops of 1% Tropicamide delivered within 5 min facilitated cycloplegic measurements. All participants were refracted 30 min after installation of the second drop.

Results: Mean spherical equivalent measures of the non-cycloplegic condition were significantly more myopic than their cycloplegic counterparts ($p < 0.05$); approximately by 0.50 D centrally, increasing to 1.00 D towards the periphery. The horizontal astigmatic component, J180, demonstrated small but statistically significant differences between the test conditions. Differences were predominant for eccentricities greater than 30° , in both nasal and temporal meridians. The oblique astigmatic component, J45, was not significantly different between the test conditions. The primary spherical aberration coefficient C(4, 0) was significantly less positive for the non-cycloplegic state than its cycloplegic counterpart. This result held true across the entire horizontal visual field. The horizontal coma and trefoil coefficients C(3, 1) and C(3, 3) were not significantly different between the two conditions.

* Corresponding author at: Level 5, Rupert Myers North Wing, Gate 14, University of New South Wales, Barker Street, Kensington, NSW 2033, Australia.

E-mail address: r.bakaraju@brienholdenvision.org (R.C. Bakaraju).

PALABRAS CLAVE

Acomodación;
Refracción periférica
y aberraciones de
alto orden

Conclusions: The use of +1.00D fogging lens without cycloplegia did not provide complete relaxation of accommodation. The discrepancies between cycloplegic and non-cycloplegic EM measurements were found to be more pronounced for peripheral field angles than central measures, for both M and J180 components.

© 2015 Spanish General Council of Optometry. Published by Elsevier España, S.L.U. This is an open access article under the CC BY-NC-ND license (<http://creativecommons.org/licenses/by-nc-nd/4.0/>).

Refracción periférica y aberraciones de alto orden con ciclopejía y lentes de miopización utilizando el dispositivo BHVI-EyeMapper

Resumen

Objetivo: Determinar si una lente de miopización (fogging) mejora los efectos de acomodación impulsados por el diseño de campo cerrado del dispositivo BHVI-EyeMapper (EM). Comparamos las mediciones de la refracción ciclopéjica y las aberraciones de alto orden realizadas por el EM, con las obtenidas con una lente de miopización.

Métodos: Se reunió a veintiséis participantes jóvenes (15M, 25 ± 5 años, rango: 18–35 años, ES: +0,25 D y $-3,50$ D) con buena salud ocular. Se registraron cinco mediciones independientes de la refracción dentro y fuera de eje y de las aberraciones de alto orden a lo largo del campo visual, bajo dos situaciones diferentes: mediciones no ciclopéjicas con una lente de miopización de +1,00 D, y mediciones ciclopéjicas, siempre en la misma secuencia. El ojo contralateral fue ocluido durante la realización de las mediciones. La administración de dos gotas de Tropicamida 1%, en un plazo de cinco minutos, facilitó las mediciones ciclopéjicas. Todos los participantes fueron sometidos a refracción a los treinta minutos de la instilación de la segunda gota.

Resultados: Las mediciones del equivalente esférico de la situación no ciclopéjica reflejaron una miopía más considerable que las ciclopéjicas ($p < 0,05$); aproximadamente de 0,50 D centrales, incrementándose a 1,00 D hacia la periferia. El componente astigmático horizontal, J180, reflejó unas pequeñas diferencias, aunque estadísticamente significativas, entre las dos situaciones de la prueba. Las diferencias fueron predominantes para excentricidades superiores a 30° , tanto en los meridianos nasales como en los temporales. El componente astigmático oblicuo, J45, no reflejó una diferencia significativa entre ambas situaciones. El coeficiente de la aberración esférica primaria C(4, 0) fue considerablemente menos positivo en las situaciones no ciclopéjicas que en las ciclopéjicas. Este resultado mantuvo su validez a lo largo de todo el campo visual horizontal. Los coeficientes del coma horizontal y trefoil C(3, 1) y C(3, 3) no reflejaron una diferencia significativa entre ambas situaciones.

Conclusiones: El uso de una lente de miopización de +1,00 D, sin ciclopejía, no aporta una relajación completa de la acomodación. Las discrepancias entre las mediciones del dispositivo EM, con y sin ciclopejía, se revelaron más pronunciadas para los ángulos de campo periféricos que para los centrales, para ambos componentes M y J180.

© 2015 Spanish General Council of Optometry. Publicado por Elsevier España, S.L.U. Este es un artículo Open Access bajo la licencia CC BY-NC-ND (<http://creativecommons.org/licenses/by-nc-nd/4.0/>).

Introduction

The actual mechanism of myopia genesis and its rate of progression are not clearly understood. Nevertheless, accumulated evidence from animal data suggests an involvement of the retinal image shell, as guided by peripheral refraction and off-axis higher-order aberrations (HOA).^{1–3} There is some clinical evidence in humans supporting the role of peripheral refraction in myopia progression.^{4–10} The emerging paradigm of the contribution of peripheral refraction to myopia development has triggered considerable interest in the peripheral optics of the eye.^{11–25} In the majority of these studies conventional, commercial instruments or

procedures, have been modified to facilitate peripheral optics measurement, requiring repeated turning of the head or eye and tedious instrument re-alignment. For this reason, techniques that facilitate expedited measurements of peripheral refraction and/or aberrations have gained much attention in the last few years.^{26–28}

In response to the desire for automated peripheral refraction, the Brien Holden Vision Institute, Sydney, Australia developed the BHVI-EyeMapper (EM), a closed-view global aberrometer (Fig. 1). The EM performs fast (<0.5 s) refraction scans across 100° of the visual field in 10° steps, along horizontal, vertical and oblique visual field meridians, without the need for eye or head turn. Complete details

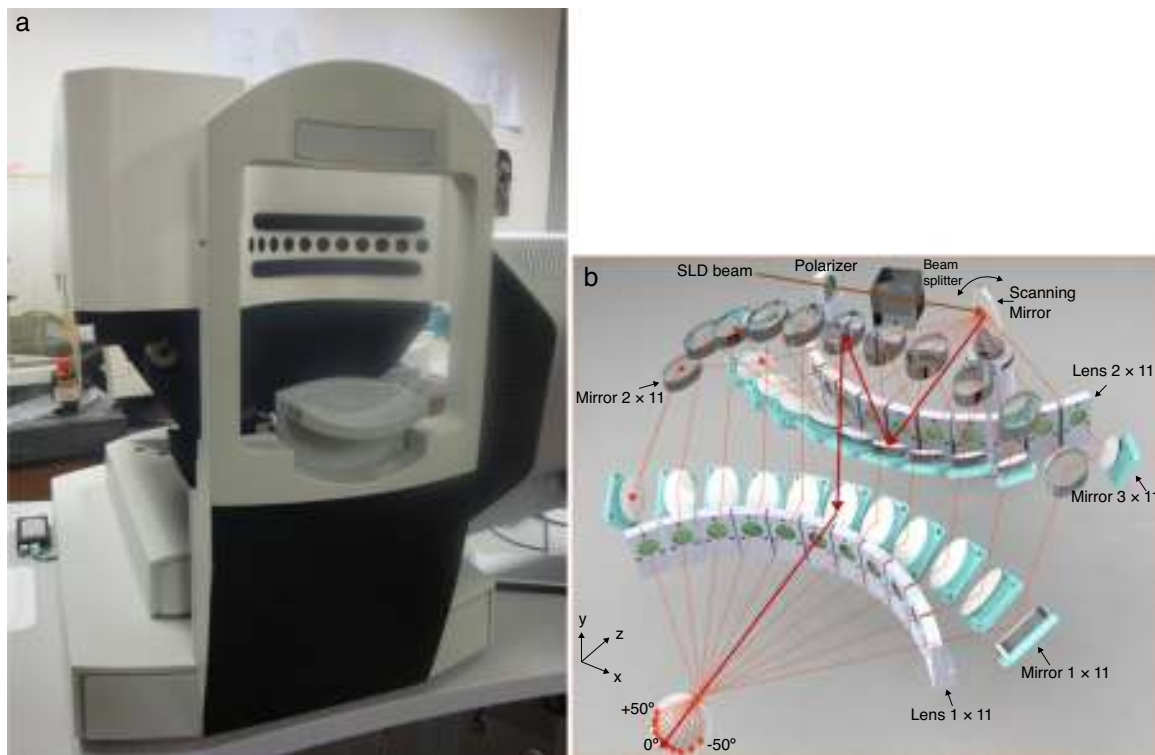


Figure 1 (a) The BHVI-EyeMapper (EM), Brien Holden Vision Institute, Sydney, Australia and (b) three-dimensional view describing the instrument design.

of the working principles of the instrument can be found elsewhere.²⁹ The EM has been previously validated against a conventional aberrometer (COAS-HD®, Wavefront Sciences, USA) in conjunction with Dynamic Stimulation Aberrometry (Optana®, Germany) and an open field autorefractor (Shin-Nippon NVision K5001®, Grand Seiko, Japan) for refraction measures obtained at distance and various near vergences (Bakaraju RC, et al. IOVS. 2012;53:ARVO E-Abstract 1354).³⁰ Overall, the EM being influenced by its closed-view instrument design produces slightly 'more negative' results, about -0.50 D more myopic for distance refraction measures than those obtained with the Shin-Nippon autorefractor. However, results were in modest agreement with those obtained with COAS-HD aberrometer, another closed-view on-axis aberrometer. In the present study, we determined trends and relative differences in the on- and off axis refraction and HOA obtained using a fogging lens versus cycloplegia. Finally we sought to determine if, driven by its closed view instrument design, the fogging lens ameliorates accommodative effects on the refraction measurements.

Methods

All the research procedures conformed to the regulations guided by the declaration of Helsinki. A local ethics committee (Bellberry, Adelaide, South Australia) approved the research protocol and the study was registered with the Australia New Zealand Clinical Trials Registry (#ACTRN12611001103954). Participants were recruited in response to an advertisement circulated via email to staff and eligible candidates on the patient database of the Brien

Holden Vision Institute, Sydney, Australia. All participants were screened for suitability using routine ocular examination, which included auto-refraction (Nidek Tonoref II, Japan), subjective refraction, visual acuity and general ocular health examination with a slit-lamp biomicroscope and direct ophthalmoscope. A total of 26 ocular healthy participants (15 female) in the age range of 18–35 years (25 ± 5 years) with best-corrected visual acuity $\geq 20/20$ in each test eye and a spherical equivalent refractive error between $+0.25$ D and -3.50 D were recruited for the study.

The EM is a closed-view aberrometer, designed to rapidly measure refractive errors and HOA of the eye over a wide range of viewing angles. The special feature of the EM is the use of numerous fixed optical components to steer the illumination and reflection beam to peripheral angles. A deflection system consisting of 33 mirrors and one scanning mirror was arranged to maintain equal optical path length while providing rapid scanning of the illumination beam across an angular range of up to $\pm 50^\circ$, measuring peripheral refractive errors and HOA in discrete 10° steps along the selected meridian, including horizontal, vertical and some oblique meridians. One measurement scan (i.e. 11 positions) takes 0.45 s. The EM's working distance is 100 mm. The instrument is equipped with an internal back-illuminated fixation target mounted on a translation stage to facilitate accommodative response measurements. The software adjustable linear stage can be manoeuvred on a continuous scale to create a range of object vergences from $+1.00$ D (fogging) to -5.00 D (accommodative target).

Five independent wavefront measurements on the unaided eyes of each participant facilitated on- and

off-axis, refraction and HOA, across the horizontal visual field under two test conditions. The measurements were always recorded in the following sequence: (1) no-cycloplegia with +1.00D fogging; and (2) under cycloplegia with Tropicamide 1%. The fellow eye was always occluded with an eye patch. Two drops of 1% w/v Tropicamide within 5 min facilitated all cycloplegic measurements. For the cycloplegic test case, all participants were measured on the EM 30 min after the installation of the last drop. Under cycloplegia, visual acuity, auto-refraction (Nidek, Japan) and subjective refraction were assessed again. For all EM measurements, the illumination of the testing room was kept below 10 lux, to ensure the wavefront measures under 'no-cycloplegia' were greater than 4 mm pupil diameter. A Maltese cross with 8-arms designed to be telecentric in object space served as the fixation target. Each wavefront measurement provided a Hartmann–Shack image for further post-processing, the commercial camera software package HASO (Imagine Optics, France) was used to derive the spot locations. Once the spot locations were obtained, custom mathematical routines written in C++/Lab windows were deployed to obtain slopes and fit them to Zernike polynomials derivatives. Refraction measures were derived as the Fourier vector components (M, J180 and J45) from the Zernike coefficients, as described elsewhere.³¹ In addition to the refraction measures, HOA up to 4th order in OSA standard were also obtained.

The refraction and HOA measurements were obtained at a 4 mm circular pupil diameter. In order to allow direct comparison of all data, i.e. cyclo versus non-cyclo, we did not consider elliptical pupils. Statistical analyses were performed using SPSS (version 18.0, Chicago, USA). Paired t-test was used to determine significant differences between cycloplegic and non-cycloplegic conditions at each visual field angle. Additional pairwise comparisons were performed between on-axis, cycloplegic and non-cycloplegic autorefractor obtained from EM, Nidek autorefractor and subjective refraction. Assuming the within participant SD to be 0.30 D, a sample size of 24 subjects was needed to detect a paired difference of 0.18 ± 0.3 D between the test conditions with alpha (α) set to 0.05 and statistical power to 80%. The sample size did not accommodate for dropouts, as the study needed only one participant visit.

Results

The means of the selected power vectors and aberration coefficients are presented as a function of retinal eccentricity (-50° to 50°) for both the test conditions. The sign convention used throughout the manuscript for the field angles is positive for nasal and negative for temporal fields. In the interest of brevity, only statistically significant and/or relevant HOA with respect to horizontal meridian are represented in figures and tables.

Fig. 2 showcases the differences in the measures of M and J180 as a function of horizontal visual field angle, for the two test conditions. At all field eccentricities, the mean spherical equivalent (M) measures obtained under the no-cycloplegia condition were significantly more myopic than under cycloplegia ($p < 0.05$). The differences were about

0.50 D centrally, increasing to about 1.00 D for peripheral field angles. Small (in the range of 0.25–0.50 D) yet statistically significant differences were found between the two test conditions, for J180 measures, particularly at peripheral field angles in the range of 30° to 40° . For the astigmatic component J45, there were no significant differences between the two conditions at any visual field angle.

Table 1 compares three Zernike coefficients: horizontal coma C(3, 1), horizontal trefoil C(3, 3) and primary spherical aberration C(4, 0), as a function of visual field eccentricity for the two test conditions. As noted, there were no statistically significant differences in the horizontal coma C(3, 1), which held true across most field eccentricities, except for nasal 10° and 20° field angles. In general, small and statistically insignificant changes were found in horizontal trefoil, with exceptions at 40° and 50° nasal field eccentricities ($p < 0.05$). Primary spherical aberration C(4, 0) was found to be significantly less positive in magnitude for the non-cycloplegic state than the corresponding measures obtained under cycloplegia. This relationship held true across the entire horizontal visual field, except at the 30° nasal and temporal visual field angles, for which the differences became insignificant ($p > 0.05$). There were no statistically significant differences in the horizontal secondary astigmatism and horizontal tetrafoil across the field eccentricities ($p > 0.05$), except for temporal 30° for the former and temporal 30° and central field angles for the latter. There were no significant differences found between the two test conditions ($p > 0.05$), for the following on-axis variables (central field measures): oblique astigmatic component (J45), vertical coma C(3, -1), vertical trefoil C(3, -3), vertical tetrafoil C(4, -4) and vertical secondary astigmatism C(4, -2).

For the on-axis cycloplegic refraction, the Nidek autorefractor produced statistically significant lower values than the EM counterparts, for M (paired $\Delta = -0.13 \pm 0.17$ D, CI: -0.20 D to -0.06 D, $p = 0.001$) and J180 components (paired $\Delta = 0.05 \pm 0.12$ D, CI: 0.00 – 0.10 D, $p = 0.047$). However, all differences were clinically insignificant. The subjective refraction measures obtained under cycloplegia were also significantly lower than the corresponding EM measures, for M (paired $\Delta = -0.09 \pm 0.21$ D, CI: -0.17 D to 0.01 D, $p = 0.044$) and J180 components (paired $\Delta = 0.10 \pm 0.16$ D, CI: 0.04 – 0.17 D, $p = 0.004$), but again, were clinically insignificant. The oblique astigmatic component, J45, was not different when cycloplegic EM measures were compared with Nidek autorefractor and subjective refraction. When the non-cycloplegic measurements were considered, the EM reported clinically relevant higher levels of myopia than the Nidek autorefractor (paired $\Delta M = -0.41 \pm 0.49$ D, CI: -0.61 D to -0.22 D, $p < 0.001$) and subjective refraction (paired $\Delta M = -0.41 \pm 0.52$ D, CI: -0.62 D to -0.20 D, $p < 0.001$). No differences were observed for J180 and J45 components between the non-cycloplegic EM, Nidek and subjective measurements (Table 2).

Discussion

The goal of the current study was to identify if the measurements obtained by the EM are influenced by its closed-view

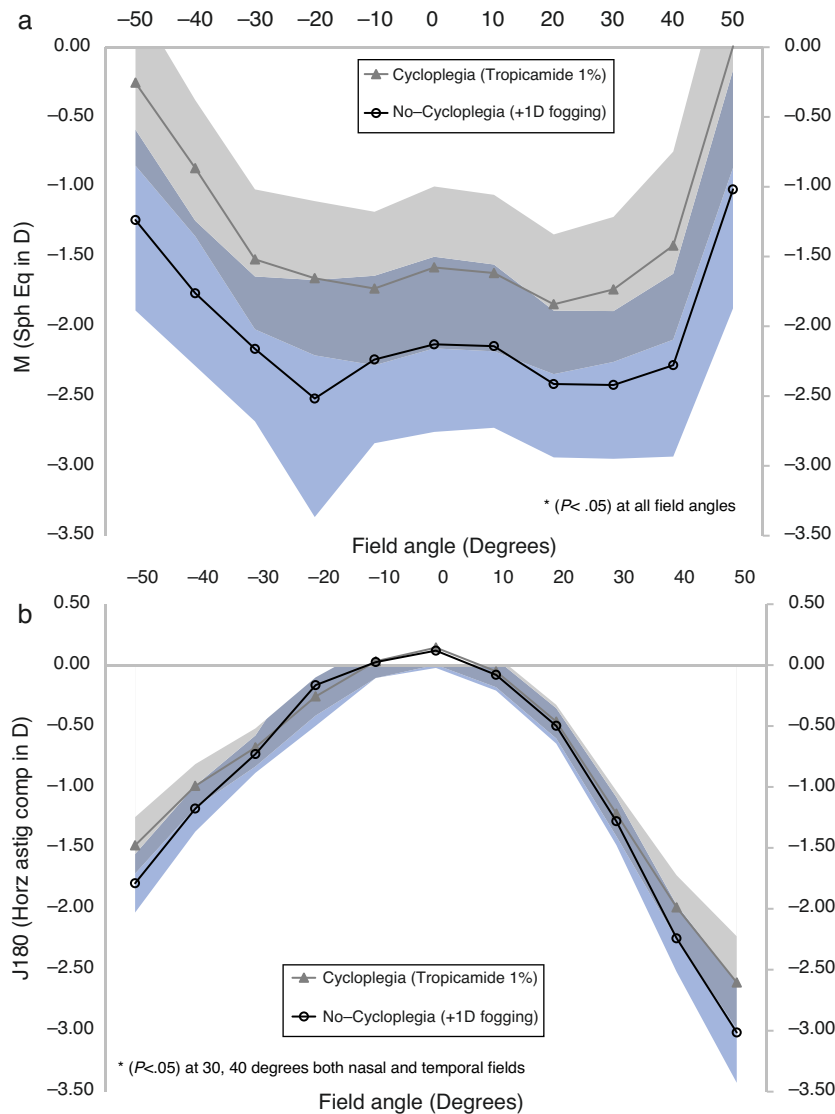


Figure 2 Refractive components M (spherical equivalent in diopters) as a function of horizontal visual field angle (in degrees) for two test conditions: (a) non-cycloplegic state with +1.00D fogging lens and (b) cycloplegic state. The shaded areas indicate 95% confidence intervals. The symbol “**” indicate statistical significant differences ($p < 0.05$) at the indicated field angles. Sign convention used was positive for nasal and negative for temporal field angles.

design. Overall, in our sample of young adults, the mean spherical equivalent (M) measures in the non-cycloplegic condition were found to be significantly more myopic than their cycloplegic counterparts ($p < 0.05$). The average differences between the cycloplegic and non-cycloplegic states are in the order of half a diopter centrally, reaching up to one diopter, across the horizontal visual field. The results suggests that the use of a +1.00D fogging lens during non-cycloplegic measurements did not provide sufficient relaxation of accommodation and certainly was also not comparable to the measures obtained for the cycloplegic state.

Querios et al.,^{32,33} have demonstrated that successful relaxation of accommodation can be attained by the use of +2.00D fogging spectacle lenses, while performing open-field central and peripheral refraction measurements.

However, in contrast, in the current myopic participant sample, using the EM, we could not reproduce the claimed successful relaxation effects of accommodation. We offer two reasons for this lack of agreement. Firstly, the magnitude of the fogging lens used in the current study was exactly half of that proposed by Querios et al. As mentioned briefly in “Methods” section, the prototype EM can facilitate a six diopter range of defocus via its internal, telecentric, Badal system (−5.00 D to +1.00 D). This range of defocus limited our choice of fogging to a maximum of +1.00 D, without disturbing the telecentricity of the optical system. We plan to rectify this limitation by replacing the current Badal system with that of a much larger dioptric range for future studies. Secondly, considering the closed-view design of the EM (as opposed to the measures reported with open-field autorefractor), the very proximity of this

Table 1 Aberration coefficients C(3, 1), C(3, 3) and C(4, 0) for 4 mm pupil diameter (in microns) as a function of horizontal visual field angle (in degrees) for cycloplegia and no-cycloplegia conditions. Sign convention for the field angles: positive for nasal and negative for temporal fields.

Variables	Field angle	N	Cycloplegia		No-cycloplegia		p-Value
			Mean	SD	Mean	SD	
C(3, 1) Horizontal coma	-50	26	0.407	0.190	0.381	0.164	0.082
	-40	26	0.250	0.100	0.246	0.096	0.514
	-30	26	0.154	0.063	0.153	0.067	0.963
	-20	26	0.105	0.049	0.117	0.100	0.560
	-10	26	0.046	0.037	0.043	0.036	0.466
	0	26	0.000	0.028	-0.004	0.029	0.282
	10	26	-0.047	0.039	-0.056	0.036	<i>0.006</i>
	20	26	-0.089	0.037	-0.102	0.039	<i>0.003</i>
	30	26	-0.145	0.060	-0.158	0.065	0.069
	40	26	-0.261	0.120	-0.254	0.122	0.371
C(3, 3) Horizontal trefoil	50	26	-0.645	0.262	-0.601	0.244	0.051
	-50	26	0.118	0.109	0.102	0.080	0.130
	-40	26	0.043	0.070	0.041	0.054	0.747
	-30	26	0.025	0.047	0.027	0.046	0.681
	-20	26	0.013	0.042	0.042	0.121	0.286
	-10	26	0.007	0.038	0.011	0.039	0.487
	0	26	0.001	0.036	0.005	0.036	0.334
	10	26	-0.008	0.044	-0.007	0.045	0.755
	20	26	-0.011	0.054	-0.016	0.056	0.392
	30	26	0.003	0.070	0.003	0.070	0.979
C(4, 0) Spherical aberration	40	26	-0.036	0.096	-0.011	0.084	<i>0.001</i>
	50	26	-0.224	0.194	-0.163	0.159	<i>0.000</i>
	-50	26	-0.046	0.045	-0.058	0.048	0.083
	-40	26	-0.003	0.024	-0.014	0.030	<i>0.011</i>
	-30	26	-0.006	0.021	-0.011	0.020	0.208
	-20	26	0.006	0.021	-0.014	0.063	0.096
	-10	26	0.016	0.024	0.008	0.023	0.063
	0	26	0.024	0.022	0.017	0.024	<i>0.002</i>
	10	26	0.024	0.022	0.018	0.022	<i>0.018</i>
	20	26	0.015	0.021	0.007	0.028	<i>0.013</i>
30	26	-0.003	0.033	-0.008	0.037	0.244	
40	26	-0.029	0.047	-0.040	0.046	0.095	
50	26	-0.072	0.080	-0.110	0.065	<i>0.025</i>	

All statistically significant *p*-values (i.e. $p < 0.05$) are italicized.

instrument potentially created a weak stimulus for accommodation. Nevertheless, it is important to note that Querios and colleagues reported in their sub-group analysis that the paired differences between the cycloplegic state and the non-cycloplegic state with fogging lenses was significantly different only in the myopic group. Furthermore, contrary to our results, they reported lower mean spherical equivalent myopic refractive error with use of fogging lenses than those achieved with cycloplegia, indicating that either cycloplegia was ineffective or the measurement data were affected by the use of a fogging lens itself.

Carkeet et al.,³⁴ investigated the effect of cycloplegia on ocular aberrations in young adults using Technolas Zywave aberrometer (Bausch and Lomb, USA) and found small yet statistically significant differences between higher order measures (3rd and 5th order) between cycloplegic

and non-cycloplegic states. Hiraoka et al.,³⁵ confirmed similar results after assessing the effect of cycloplegia on ocular aberrations in children using the Topcon Hartmann-Shack aberrometer (KR-9000PW, Topcon, Tokyo, Japan) and 1% Atropine. Our results, reported from a custom-built instrument, are in agreement with these previous reports. However, it is worth noting that unlike in Hiraoka et al., we used 1% Tropicamide, for a shorter duration of cycloplegic effect. Further, it is important to note that the previous studies examined the effects of cycloplegia on the on-axis HOA while the current study extends this to horizontal peripheral visual field, encompassing -50° to 50° .

Although small, it is interesting to note that there were significant differences between the Nidek autorefractor and EM measures even under complete cycloplegia. Such discrepancies in measurements could be plausibly explained

Table 2 The comparison of the mean on-axis refraction decomposed into three Fourier components (M, J180 and J45 in Diopters) obtained in the following conditions: (i) EM and Nidek autorefractor under complete cycloplegia; (ii) EM and Nidek autorefractor, under no-cycloplegia; (iii) EM and subjective refraction under cycloplegia and (iv) EM and subjective refraction under no-cycloplegia. All units are in Diopters.

Variables	Field angle	N	EM (cycloplegia)		Nidek (cycloplegia)		p-Value
			Mean	SD	Mean	SD	
M	0	26	-1.58	1.51	-1.45	1.50	0.001
J180	0	26	0.14	0.37	0.09	0.33	0.047
J45	0	26	-0.04	0.17	-0.03	0.19	0.693
Variables	Field angle	N	EM (no-cycloplegia +1 D)		Nidek (no-cycloplegia)		p-Value
			Mean	SD	Mean	SD	
M	0	26	-2.13	1.63	-1.72	1.36	0.000
J180	0	26	0.12	0.37	0.07	0.34	0.170
J45	0	26	-0.03	0.19	-0.01	0.16	0.573
Variables	Field angle	N	EM (cycloplegia)		Subjective (cycloplegia)		p-Value
			Mean	SD	Mean	SD	
M	0	26	-1.58	1.51	-1.49	1.43	0.044
J180	0	26	0.14	0.37	0.04	0.27	0.004
J45	0	26	-0.04	0.17	0.00	0.15	0.065
Variables	Field angle	N	EM (no-cycloplegia +1 D)		Subjective (no-cycloplegia)		p-Value
			Mean	SD	Mean	SD	
M	0	26	-2.13	1.63	-1.72	1.36	0.000
J180	0	26	0.12	0.37	0.06	0.28	0.052
J45	0	26	-0.03	0.19	-0.01	0.14	0.419

by the differences in the measurement techniques. The EM is based on Hartmann-shack aberrometry principles in which a complete circular region of interest is considered for obtaining refraction measurements, while the Nidek autorefractor analyses projected infrared rings that only consider an annular region of the pupil. Further, it is worth noting that the EM measures were computed using Seidel defocus (i.e. paraxial curvature matched measures that includes defocus and primary spherical aberration) unlike the Nidek.

It can be argued that the use of a single power fogging lens (+1 D) for testing various degrees of myopic participants in the study could be a limitation, as the fogging lens could have resulted in a slightly different level of accommodation control for different magnitudes of myopia. We chose to use one identical test case scenario across the experiment to reduce the possible effects of other confounding variables.

Overall, our results suggest that the refraction values from the EM obtained for non-cycloplegic conditions could be slightly more myopic than their cycloplegic counterparts, despite the use of a +1.00D fogging lens while performing the measurement. This shift can principally attributed to instrument-driven proximal accommodation. While performing subjective refraction, using the objective EyeMapper output as a start point, it is important to bear in mind that the start point could be geared towards more

myopia or less hyperopia and appropriate subjective fogging techniques are needed for an optimal refraction endpoint. The EM used here was a prototype. The next generation capable of providing an increased dioptric range to facilitate greater levels of fogging is now under development. Further work may be required to assess whether the use of stronger fogging lenses would ameliorate accommodation effects due to the closed-view nature of the instrument, in particular, in studies that involve even younger participants for whose refraction measurements, accommodation control is much more crucial.

Conclusion

The use of +1.00D fogging lens did not provide complete relaxation of accommodation which observation was clearly demonstrated when compared with the measurements produced under cycloplegia. Data from older individuals in the study confirm that proximal accommodation due to the closed view design of the EM plays an important role while performing refraction measurements. Accommodation affects the peripheral refraction more than central refraction for both, M and J180. A stronger fogging lens may be needed in vision studies involving younger populations where accommodation control can be crucial.

Conflicts of interest

Some of the authors are inventors on the patents that relate to the BHVI-EyeMapper: C. Fedtke (AU2011902736), K. Ehrmann (WO 2008/116270 A1, AU2011902736), D. Falk (AU2011902736), B. Holden (WO 2008/116270 A1).

Acknowledgements

The authors would like to acknowledge the clinical team (Ms. Chung, Mr. Ozkan, Ms. Robertson and Ms. Crompton) and the database management team (Dr. Naduvilath and Ms. Laarakkers) for their invaluable support to run the study at the Clinical Trial Research Centre, Brien Holden Vision Institute, Sydney, Australia. Authors would like to extend their thanks to Dr. Flanagan for reviewing the manuscript.

References

- Mutti DO, Sholtz RI, Friedman NE, Zadnik K. Peripheral refraction and ocular shape in children. *Invest Ophthalmol Vis Sci.* 2000;41:1022–1030.
- Hung LF, Ramamirtham R, Huang J, Qiao-Grider Y, Smith EL 3rd. Peripheral refraction in normal infant rhesus monkeys. *Invest Ophthalmol Vis Sci.* 2008;49:3747–3757.
- Smith EL 3rd. Prentice Award Lecture 2010: a case for peripheral optical treatment strategies for myopia. *Optom Vis Sci.* 2011;88:1029–1044.
- Chen X, Sankaridurg P, Donovan L, et al. Characteristics of peripheral refractive errors of myopic and non-myopic Chinese eyes. *Vis Res.* 2010;50:31–35.
- Mutti DO, Hayes JR, Mitchell GL, et al. Refractive error, axial length, and relative peripheral refractive error before and after the onset of myopia. *Invest Ophthalmol Vis Sci.* 2007;48:2510–2519.
- Charman WN, Radhakrishnan H. Peripheral refraction and the development of refractive error: a review. *Ophthalmic Physiol Opt.* 2010;30:321–338.
- Sankaridurg P, Donovan L, Varnas S, et al. Spectacle lenses designed to reduce progression of myopia: 12-month results. *Optom Vis Sci.* 2010;87:631–641.
- Sankaridurg P, Holden B, Smith E, et al. Decrease in rate of myopia progression with a contact lens designed to reduce relative peripheral hyperopia: one-year results. *Invest Ophthalmol Vis Sci.* 2011;52:9362–9367.
- Walline JJ, Greiner KL, McVey ME, Jones-Jordan LA. Multifocal contact lens myopia control. *Optom Vis Sci.* 2013;90:1207–1214.
- Walline JJ, Lindsley K, Vedula SS, Cotter SA, Mutti DO, Twelker JD. Interventions to slow progression of myopia in children. *Cochrane Database Syst Rev.* 2011;(12.), <http://dx.doi.org/10.1002/14651858.CD004916.pub3>. Art. No.: CD004916.
- Lopes-Ferreira D, Ribeiro C, Maia R, et al. Peripheral myopia using a dominant design multifocal contact lens. *J Optom.* 2011;4:14–21.
- Atchison DA, Pritchard N, White SD, Griffiths AM. Influence of age on peripheral refraction. *Vis Res.* 2005;45:715–720.
- Atchison DA, Pritchard N, Schmid KL. Peripheral refraction along the horizontal and vertical visual fields in myopia. *Vis Res.* 2006;46:1450–1458.
- Charman WN, Jennings JA. Longitudinal changes in peripheral refraction with age. *Ophthalmic Physiol Opt.* 2006;26:447–455.
- Charman WN, Mountford J, Atchison DA, Markwell EL. Peripheral refraction in orthokeratology patients. *Optom Vis Sci.* 2006;83:641–648.
- Atchison DA, Scott DH, Charman WN. Measuring ocular aberrations in the peripheral visual field using Hartmann–Shack aberrometry. *J Opt Soc Am A Opt Image Sci Vis.* 2007;24:2963–2973.
- Calver R, Radhakrishnan H, Osuobeni E, O’Leary D. Peripheral refraction for distance and near vision in emmetropes and myopes. *Ophthalmic Physiol Opt.* 2007;27:584–593.
- Berntsen DA, Mutti DO, Zadnik K. Validation of aberrometry-based relative peripheral refraction measurements. *Ophthalmic Physiol Opt.* 2008;28:83–90.
- Radhakrishnan H, Charman WN. Peripheral refraction measurement: does it matter if one turns the eye or the head? *Ophthalmic Physiol Opt.* 2008;28:73–82.
- Mathur A, Atchison DA, Charman WN. Myopia and peripheral ocular aberrations. *J Vis.* 2009;9:15 11–1512.
- Whatham A, Zimmermann F, Martinez A, et al. Influence of accommodation on off-axis refractive errors in myopic eyes. *J Vis.* 2009;9:1411–1413.
- Atchison DA, Mathur A, Read SA, et al. Peripheral ocular aberrations in mild and moderate keratoconus. *Invest Ophthalmol Vis Sci.* 2010;51:6850–6857.
- Kang P, Swarbrick H. Peripheral refraction in myopic children wearing orthokeratology and gas-permeable lenses. *Optom Vis Sci.* 2011;88:476–482.
- Taberero J, Ohlendorf A, Fischer MD, Bruckmann AR, Schiefer U, Schaeffel F. Peripheral refraction profiles in subjects with low foveal refractive errors. *Optom Vis Sci.* 2011;88:E388–E394.
- Kwok E, Patel B, Backhouse S, Phillips JR. Peripheral refraction in high myopia with spherical soft contact lenses. *Optom Vis Sci.* 2012;89:263–270.
- Taberero J, Schaeffel F. Fast scanning photoretinoscope for measuring peripheral refraction as a function of accommodation. *J Opt Soc Am A Opt Image Sci Vis.* 2009;26:2206–2210.
- Wei X, Thibos L. Design and validation of a scanning Shack Hartmann aberrometer for measurements of the eye over a wide field of view. *Opt Express.* 2010;18:1134–1143.
- Jaeken B, Lundstrom L, Artal P. Fast scanning peripheral wave-front sensor for the human eye. *Opt Express.* 2011;19:7903–7913.
- Fedtke C, Ehrmann K, Falk D, Bakaraju RC, Holden BA. The BHVI-EyeMapper: peripheral refraction and aberration profiles. *Optom Vis Sci.* 2014;91:1199–1207.
- Fedtke C, Ehrmann K, Falk D, Holden BA. Validation of a quasi real-time global aberrometer: the EyeMapper. *Proc SPIE.* 2012;8209:1–7.
- Salmon TO, West RW, Gasser W, Kenmore T. Measurement of refractive errors in young myopes using the COAS Shack–Hartmann aberrometer. *Optom Vis Sci.* 2003;80:6–14.
- Queiros A, Gonzalez-Mejome J, Jorge J. Influence of fogging lenses and cycloplegia on open-field automatic refraction. *Ophthalmic Physiol Opt.* 2008;28:387–392.
- Queiros A, Jorge J, Gonzalez M. Influence of fogging lenses and cycloplegia on peripheral refraction. *J Optom.* 2009;2:83–89.
- Carkeet A, Velaedan S, Tan YK, Lee DY, Tan DT. Higher order ocular aberrations after cycloplegic and non-cycloplegic pupil dilation. *J Refract Surg.* 2003;19:316–322.
- Hiraoka T, Miyata K, Nakamura Y, et al. Influences of cycloplegia with topical atropine on ocular higher-order aberrations. *Ophthalmology.* 2013;120:8–13.