



ORIGINAL ARTICLE

Validation of a modified ETDRS chart for European-wide use in populations that use the Cyrillic, Latin or Greek alphabet

Sotiris Plainis^{a,*}, Joanna Moschandreas^c, Trisevgeni Giannakopoulou^a,
Vania Vitanova^b, Panagoula Nikolitsa^a, Jos J. Rozema^d, Marie-José Tassignon^e,
Miltiadis K. Tsilimbaris^{a,b}, Ioannis G. Pallikaris^{a,b}

^a Institute of Vision and Optics (IVO), University of Crete, Greece

^b Department of Ophthalmology, University Hospital of Crete, Heraklion, Greece

^c Department of Social Medicine, School of Health Sciences University of Crete, Greece

^d Department of Ophthalmology, Antwerp University Hospital, Edegem, Belgium

^e Department of Medicine and Health Science, University of Antwerp, Wilrijk, Belgium

Received 17 May 2012; accepted 18 June 2012

Available online 24 July 2012

KEYWORDS

Visual acuity;
Validation;
Test–retest
variability;
Acuity charts

Abstract

Purpose: To validate a modified ETDRS visual acuity (VA) chart developed for European-wide use, in populations that use the Cyrillic, Latin or Greek alphabet.

Methods: The charts were validated in three groups: 310 school children in Bulgaria (mean age 13 ± 1 years), 227 school children in Greece (mean age 14 ± 1 years) and 85 patients with no ocular pathology in Belgium (mean age 26 ± 5 years). VA was assessed with the habitual refractive correction, using the standard ETDRS charts and the modified European-wide charts. The intra-class correlation coefficient (ICC) was used to assess the test–retest reliability of the European-wide chart. The Bland–Altman comparison method was used to assess agreement between the two different versions of the new chart, as well as to compare these to the standard ETDRS-charts. Limits of agreement were calculated for differences in VA scores (test–retest variability (TRV)) between measurement sessions for the European-wide charts.

Results: The TRV of the European-wide charts was found to be ± 0.10 logMAR, corresponding to 5 ETDRS letters, for both chart 1 and chart 2. The ICC was estimated to be 0.968 for the RE and 0.961 for the LE. The European-wide charts generated on average slightly higher logMAR scores compared to the standard ETDRS charts in all three groups.

Conclusions: The “European-wide” charts appear to be a valid alternative to the standard ETDRS acuity charts, offering the advantage of containing letters readable by all European citizens.

© 2012 Spanish General Council of Optometry. Published by Elsevier España, S.L. All rights reserved.

* Corresponding author at: Institute of Vision and Optics (IVO), School of Health Sciences, University of Crete, PO Box 2208, 71003 Heraklion, Crete, Greece.

E-mail address: plainis@med.uoc.gr (S. Plainis).

PALABRAS CLAVE

Agudeza visual;
Validación;
Variabilidad
prueba–reprueba;
Cuadros ETDRS

Validación de un test ETDRS modificado para uso a nivel europeo en poblaciones que utilizan el alfabeto cirílico, latino o griego

Resumen

Objetivo: Validar un test ETDRS de agudeza visual modificado, desarrollado para su uso en Europa, en poblaciones que utilizan el alfabeto cirílico, latino o griego.

Métodos: Los tests fueron validados en tres grupos: 310 escolares en Bulgaria (edad media 13 ± 1 años), 227 escolares en Grecia (edad media 14 ± 1 años) y 85 pacientes sin patología ocular en Bélgica (edad media 26 ± 5 años). Se evaluó la agudeza visual con la corrección refractiva habitual, utilizando los tests ETDRS estándar y los tests para uso europeo modificados. Se utilizó el coeficiente de correlación intraclase (ICC) para evaluar la fiabilidad intraobservador del test para uso europeo. Se utilizó el método de comparación Bland–Altman para evaluar la concordancia entre las dos versiones diferentes del nuevo test, así como para comparar éstas con los tests ETDRS estándar. Se calcularon los límites de concordancia para las diferencias en las puntuaciones de la agudeza visual (variabilidad test–retest) entre las sesiones de medición para los tests de uso europeo.

Resultados: Se comprobó que la variabilidad test–retest de los tests de uso europeo era de $\pm 0,10$ logMAR, correspondiente a 5 letras ETDRS, tanto para las láminas 1 y 2. Se estimó que el ICC era de 0,968 para el ojo derecho, y 0,961 para el izquierdo. Los tests de uso europeo generaron, de media, unas puntuaciones logMAR ligeramente superiores a las de los tests ETDRS estándar en los tres grupos.

Conclusiones: Los tests “de uso europeo” parecen ser una alternativa válida a los tests de agudeza visual ETDRS, con la ventaja de que ofrecen letras legibles por todos los ciudadanos europeos.

© 2012 Spanish General Council of Optometry. Publicado por Elsevier España, S.L. Todos los derechos reservados.

Introduction

VA is by far the most commonly used vision test. Since it measures foveal function, it is the preferred test for the assessment of the quality of the optical image and is the standard procedure used to quantify the severity of most ocular disorders and the efficacy of their therapeutic interventions. Snellen's original chart,¹ introduced in 1862, met worldwide acceptance for more than a century, despite the well-documented limitations from the early years owing to the inconsistent progression in letter size between successive lines,^{2–5} and its poor reliability.^{6–8} In 1976, Bailey and Lovie⁹ incorporated the advantages of Green's⁴ logarithmic (geometric) progression in their chart and developed a rigorous chart design and test protocol, which has now become an international standard, largely because it was implemented by the US National Eye Institute (NEI) in the Early Treatment Diabetic Retinopathy Study (ETDRS).¹⁰ Although the ETDRS charts included Louise Sloan's letter which offered comparable legibility,¹¹ a revised set of ETDRS charts was more recently proposed,¹² aiming to minimize the differences in relative difficulty between lines on the charts. Today, ETDRS acuity is considered the gold standard in research, education and clinical settings.³

A limitation of the original ETDRS charts is that they do not allow for European-wide implementation, since they contain letters from the Latin (Roman) alphabet, which are not readable by all European citizens. To facilitate reliable VA screening for clinical trials and exchange of patient data between clinics and researchers throughout Europe other

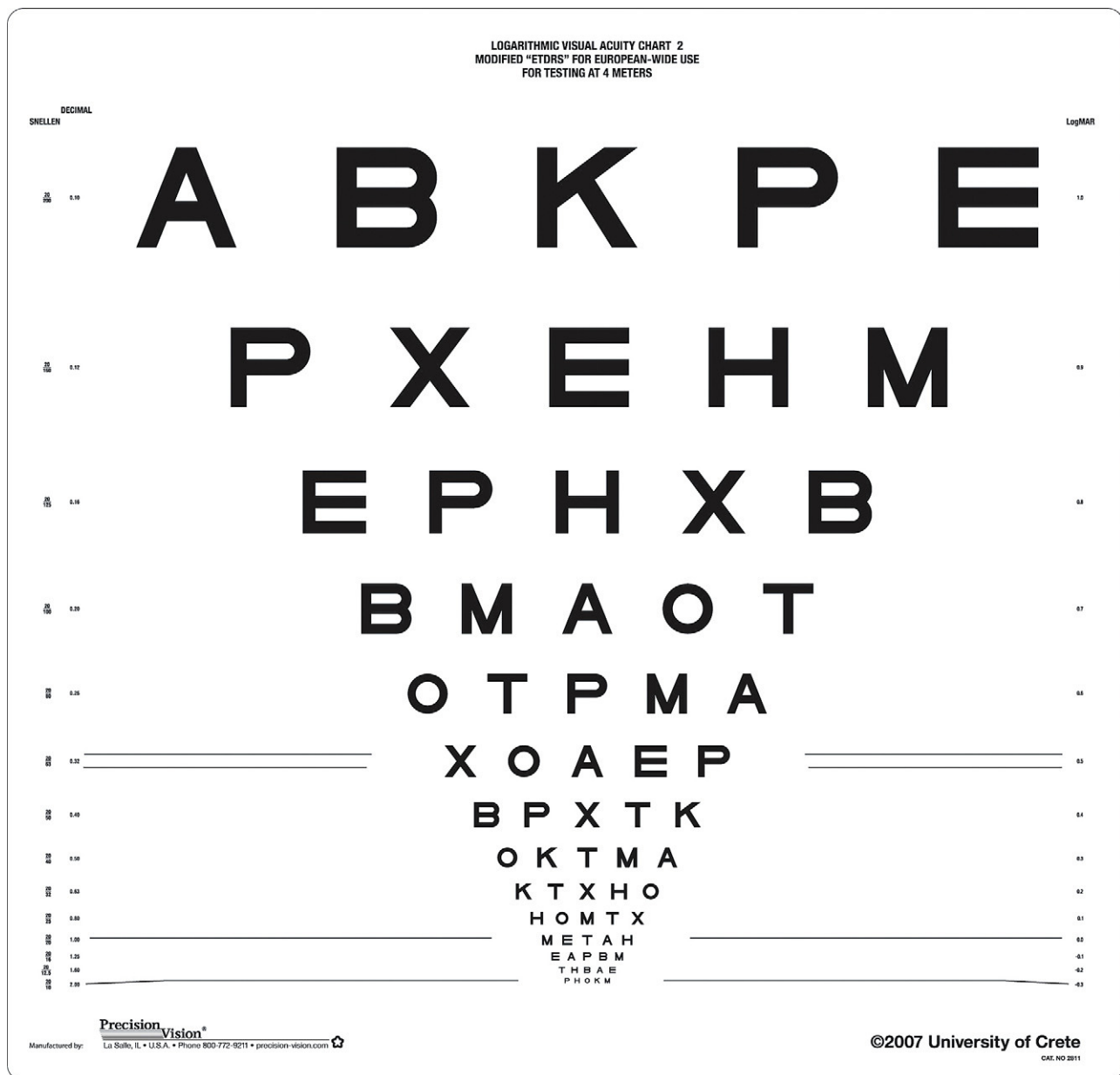
symbols, such as the Landolt C and the tumbling E, have been in common usage. However, measuring VA with such optotypes results in lower VA scores compared to a letter chart in both normal and visually impaired patients,^{13–16} since different visual processes are implemented (i.e. gap detection) in comparison to the discrimination character of letter acuity.

More recently a modified ETDRS chart with selected Sloan letters has been developed, as a common tool for countries using the Latin, Greek and Cyrillic alphabets.¹⁷ The modified charts have been validated against the original ETDRS in a Greek population.¹⁷ In this study the charts are also validated in populations using the Cyrillic and the Latin alphabets.

Methods**The charts**

The ETDRS modified “European-wide” charts (Precision Vision, La Salle, USA) contain a set of Roman letters that are common to all three European alphabets (Latin, Greek and Cyrillic) and are consequently readable by European citizens. The Roman letters C, D, N, R, S, V and Z (contained in the standard ETDRS chart) are substituted with E, P, X, B, T, M and A, respectively. The new letters were constructed on Snellen's 5×5 grid and are compatible with the specifications of the Sloan letters.¹¹ Fig. 1 depicts the two versions of the modified charts used for recording VA in the right (chart 1) and left (chart 2) eye.





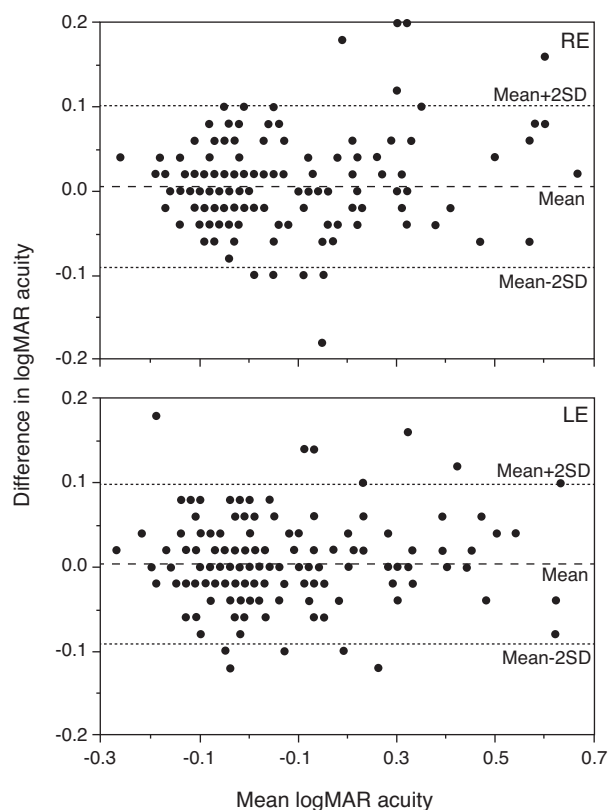


Figure 2 Plot of the difference in logMAR acuity between the measurements with the European-wide charts against their average (Bland–Altman analysis) for chart 1 (upper graph) and chart 2 (lower graph) in the Bulgarian group. The dashed line represents the mean difference, whereas the dotted lines the mean ± 1.96 SD. Note that 0.02 logMAR corresponds to one ETDRS letter.

agreement between the two different versions of the “European-wide” chart, as well as to compare these to the standard ETDRS-charts. Limits of agreement were calculated for differences in VA scores (TRV) between measurement sessions for the European-wide chart.²⁰ Average differences were compared using paired samples *t*-tests. The assumption of normality of the differences was evaluated by inspection of quantile–quantile normal plots. The statistical package SPSS 15.0 (SPSS Inc., Chicago, IL, USA) was used throughout.

Results

Test–retest variability of the European-wide charts

The ICC was estimated to be 0.968 (95% CI from 0.958 to 0.975) for chart 1 and 0.961 (95% CI from 0.950 to 0.970) for chart 2. To illustrate the extent of agreement between the two sets of charts, the Bland–Altman method was used (Fig. 2). The TRV of the “European-wide” charts, estimated in Bulgarian children was found to be ± 0.10 (corresponding to 5 ETDRS letters) for both chart 1 and chart 2.

Comparison between the European-wide and the standard ETDRS charts

In the Bulgarian group of children the “European-wide” charts generated on average slightly higher logMAR acuity scores, by 0.01 logMAR (with 95% CI 0.00–0.02, $p = 0.002$) for chart 1 and 0.02 logMAR (with 95% CI 0.01–0.03, $p < 0.001$) for chart 2 compared to the standard ETDRS charts, which corresponds to half and one letter difference, respectively (Fig. 3a). The 95% limits of agreements between the two charts were ± 0.13 logMAR.

In the Belgian group of adults, the difference in the VA between the two charts was 0.01 logMAR (with 95% CI -0.01 to 0.02 , $p = 0.40$) for chart 1 and 0.01 (with 95% CI 0.00–0.02, $p = 0.42$) logMAR for chart 2. The 95% limits of agreements between the two charts were ± 0.11 logMAR. Finally, in the Greek group of children the mean difference in logMAR between the two sets of charts was 0.02 (with 95% CI 0.01–0.03, $p < 0.001$) for chart 1 and 0.03 (with 95% CI 0.02–0.04, $p < 0.001$) for chart 2, indicating that the European-wide charts were on average less difficult. The 95% limits of agreements between the two charts were ± 0.10 logMAR.

Discussion

In the current work the reliability and variability of a modified set of ETDRS charts was assessed. These charts contain letters that are common to all European alphabets, offering European-wide implementation.¹⁷ The charts were found to have excellent test–retest reliability and an acceptable level of TRV (± 0.10 for both charts) compared to published estimates of the gold standard ETDRS chart, which range between ± 0.07 and ± 0.11 log MAR in eyes with no ocular pathology and good vision.^{7,21–25} Higher TRV values (from ± 0.16 ; to ± 0.24) have been reported in patients with reduced vision due to small amounts of defocus^{7,26} or ocular pathologies.^{27,28}

In the present study, the participants were healthy adolescents and young adults. Although there are no reports linking TRV in acuity with participants’ age and/or their intellectual level, young children are expected to show higher scores of TRV, since a large spread has been observed in the acuities of healthy adolescents compared to adults.^{29,30} This may be due to acuity development during childhood or to behavioral causes, such as their reluctance to guess the identity of letters that are difficult to see.²⁹ Further work will aim to validate the charts in populations with ocular pathologies and healthy older adults. Moreover, the “European-wide” charts produced close agreement in VA scores with the standard ETDRS chart (95% LoA ranged between ± 0.10 and ± 0.13 logMAR), providing on average slightly better VA (between 0.01 and 0.03 logMAR) in all populations tested, using the Greek, Cyrillic or Latin alphabet.

ETDRS acuity is currently used extensively in all clinical trials and research studies where the precision measurement of VA is crucial. The “European-wide” charts form a valid alternative to the standard ETDRS chart, offering the advantage of containing letters readable by all European citizens.

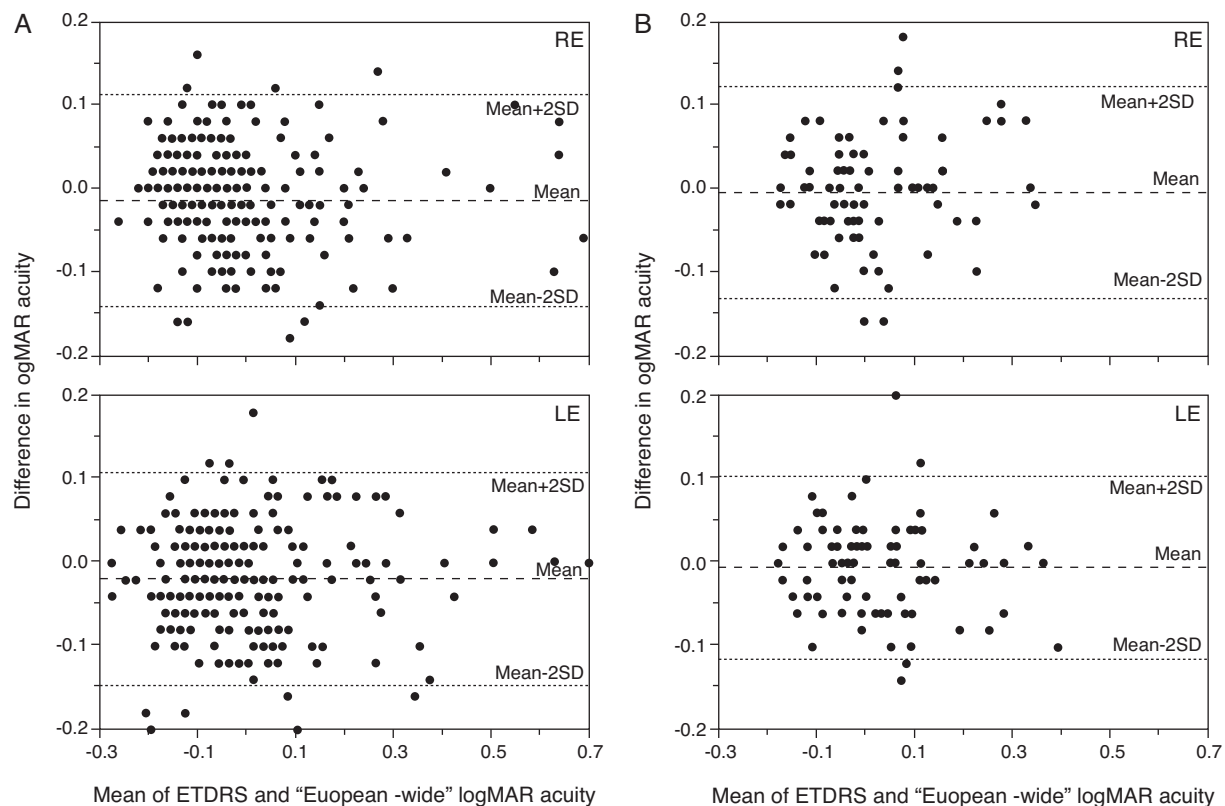


Figure 3 Plot of the difference in logMAR acuity between the measurements with the European-wide and the standard ETDRS charts against their average acuity for chart 1 (upper graph) and chart 2 (lower graph). The dashed line represents the mean difference, whereas the dotted lines the limits of agreement. Data from the Bulgarian (a, left) and Belgian (b, right) subjects are plotted.

Conflicts of interest

The authors report no conflicts of interest. The University of Crete, Sotiris Plainis, Ioannis Pallikaris and Miltiadis Tsilimbaris receive a small royalty from the sales of the University of Crete (European-wide) visual acuity charts.

Acknowledgements

We would like to acknowledge Dr. August Colenbrander for his useful remarks on VA assessment. Preliminary results of the study were presented at the Association for Research in Vision and Ophthalmology, Ft. Lauderdale, FL, in May 2008.

References

- Snellen H. Optotypi ad visum determinandum. Utrecht: PW van de Weijer 1862.
- Charman WN. Editorial. *Ophthalmic Physiol Opt.* 1981;3:1–2.
- Colenbrander A. Measuring vision and vision loss. In: Tasman W, Jaeger E, editors. *Duane's clinical ophthalmology*, vol. 5. Lippincott Williams & Wilkins; 2001.
- Green J. On a new series of test-letters for determining the acuteness of vision. *Transact Amer Opth Soc.* 1868;4th meeting:68–71.
- Holladay JT. Visual acuity measurements. *J Cataract Refract Surg.* 2004;30:287–290.
- Gibson RA, Sanderson HF. Observer variation in ophthalmology. *Br J Ophthalmol.* 1980;64:457–460.
- Lovie-Kitchin JE. Validity and reliability of visual acuity measurements. *Ophthalmic Physiol Opt.* 1988;8:363–370.
- Raasch TW, Bailey IL, Bullimore MA. Repeatability of visual acuity measurement. *Optom Vis Sci.* 1998;75:342–348.
- Bailey IL, Lovie JE. New design principles for visual acuity letter charts. *Am J Optom Physiol Opt.* 1976;53:740–745.
- Ferris 3rd FL, Kassoff A, Bresnick GH, Bailey I. New visual acuity charts for clinical research. *Am J Ophthalmol.* 1982;94:91–96.
- Sloan L, Rowland WM, Altam A. Comparison of three types of test target for measurement of visual acuity. *Q Rev Ophthalmol Otorhinolaryngol.* 1952;8:4–17.
- Ferris 3rd FL, Freidlin V, Kassoff A, Green SB, Milton RC. Relative letter and position difficulty on visual acuity charts from the Early Treatment Diabetic Retinopathy Study. *Am J Ophthalmol.* 1993;116:735–740.
- Becker R, Graf M. Landolt C and snellen e acuity: differences in strabismus amblyopia? *Klin Monatsbl Augenheilkd.* 2006;223:24–28.
- Becker R, Teichler G, Graf M. Comparison of visual acuity measured using Landolt-C and ETDRS charts in healthy subjects and patients with various eye diseases. *Klin Monatsbl Augenheilkd.* 2011;228:864–867.
- Grimm W, Rassow B, Wesemann W, Saur K, Hilz R. Correlation of optotypes with the Landolt ring – a fresh look at the comparability of optotypes. *Optom Vis Sci.* 1994;71:6–13.
- Wittich W, Overbury O, Kapusta MA, Watanabe DH. Differences between recognition and resolution acuity in patients

- undergoing macular hole surgery. *Invest Ophthalmol Vis Sci*. 2006;47:3690–3694.
17. Plainis S, Tzatzala P, Orphanos Y, Tsilimbaris MK. A modified ETDRS visual acuity chart for European-wide use. *Optom Vis Sci*. 2007;84:647–653.
 18. Ferris 3rd FL, Bailey I. Standardizing the measurement of visual acuity for clinical research studies: guidelines from the Eye Care Technology Forum. *Ophthalmology*. 1996;103:181–182.
 19. Weir JP. Quantifying test–retest reliability using the intra-class correlation coefficient and the SEM. *J Strength Cond Res*. 2005;19:231–240.
 20. Bland JM, Altman DG. Statistical methods for assessing agreement between two methods of clinical measurement. *Lancet*. 1986;1:307–310.
 21. Arditi A, Cagenello R. On the statistical reliability of letter-chart visual acuity measurements. *Invest Ophthalmol Vis Sci*. 1993;34:120–129.
 22. Elliott DB, Sheridan M. The use of accurate visual acuity measurements in clinical anti-cataract formulation trials. *Ophthalmic Physiol Opt*. 1988;8:397–401.
 23. Rosser DA, Cousens SN, Murdoch IE, Fitzke FW, Laidlaw DA. How sensitive to clinical change are ETDRS logMAR visual acuity measurements? *Invest Ophthalmol Vis Sci*. 2003 Aug;44:3278–3281.
 24. Rosser DA, Laidlaw DA, Murdoch IE. The development of a “reduced logMAR” visual acuity chart for use in routine clinical practice. *Br J Ophthalmol*. 2001;85:432–436.
 25. Siderov J, Tiu AL. Variability of measurements of visual acuity in a large eye clinic. *Acta Ophthalmol Scand*. 1999;77:673–676.
 26. Rosser DA, Murdoch IE, Cousens SN. The effect of optical defocus on the test–retest variability of visual acuity measurements. *Invest Ophthalmol Vis Sci*. 2004;45:1076–1079.
 27. Falkenstein IA, Cochran DE, Azen SP, et al. Comparison of visual acuity in macular degeneration patients measured with snellen and early treatment diabetic retinopathy study charts. *Ophthalmology*. 2008;115:319–323.
 28. Laidlaw DA, Abbott A, Rosser DA. Development of a clinically feasible logMAR alternative to the Snellen chart: performance of the “compact reduced logMAR” visual acuity chart in amblyopic children. *Br J Ophthalmol*. 2003;87:1232–1234.
 29. Dobson V, Clifford-Donaldson CE, Green TK, Miller JM, Harvey EM. Normative monocular visual acuity for early treatment diabetic retinopathy study charts in emmetropic children 5 to 12 years of age. *Ophthalmology*. 2009;116:1397–1401.
 30. Elliott DB, Yang KC, Whitaker D. Visual acuity changes throughout adulthood in normal, healthy eyes: seeing beyond 6/6. *Optom Vis Sci*. 1995;72:186–191.